

# NEW-TEM

## PRODUCT DATA SHEET

THE ONLY ONE TEM WITH HORIZONTAL  
DEBURRING CHAMBER PATENTED



## XP L 245

This machine assembles a deburring chamber with an internal diameter of 260 mm and lengths ranging from 350 to 500 mm. It's designed for light alloys such as aluminium, zinc alloy, copper and their alloys, with operating pressures from 2 to 10 bar.

**This version is particularly suitable  
for deburring large aluminium blocks.**

Operating pressures  
(bar)



Chamber length  
(mm)



Diameter chamber  
measures (mm)



### THE ADVANTAGE OF THE HORIZONTAL REVOLUTION

#### 1. MORE CARE IN THE TREATMENT

With New-Tem the main flame is tangent and acts over the basket, in this way the flame does not hit directly the pieces.

#### 2. RANGE EXPANSION OF TREATMENT

The tangent flame over the basket allows to expand the range of treatable pieces, no longer subject to superficial burns.

#### 3. RESULTS UNIFORMITY

The baskets are completely surrounded by the deburring atmosphere avoiding the presence of protected areas.

#### 4. HANDINESS

The rectangular shape of baskets, containing the pieces, facilitates the insertion in to the chamber and reduces the time for the manual positioning of the pieces.

#### 5. CHAMBER INTERCHANGEABILITY = FLEXIBILITY

An easy interchangeability of the deburring chambers of different lengths gives the possibility of production change.

#### 6. SAFE IGNITION

The use of low voltage current for the ignition of the mixture with an innovative system allows an easy ignition even at low pressures.

#### 7. SIMPLIFICATION

The stroke of the chamber closing cylinder has been remarkably reduced: only 20 mm.

#### 8. COST REDUCTION

We obtained a considerable simplification of the machine, which is extremely compact and allows a significant costs reduction of installation, maintenance and support.

### OTHER FEATURES

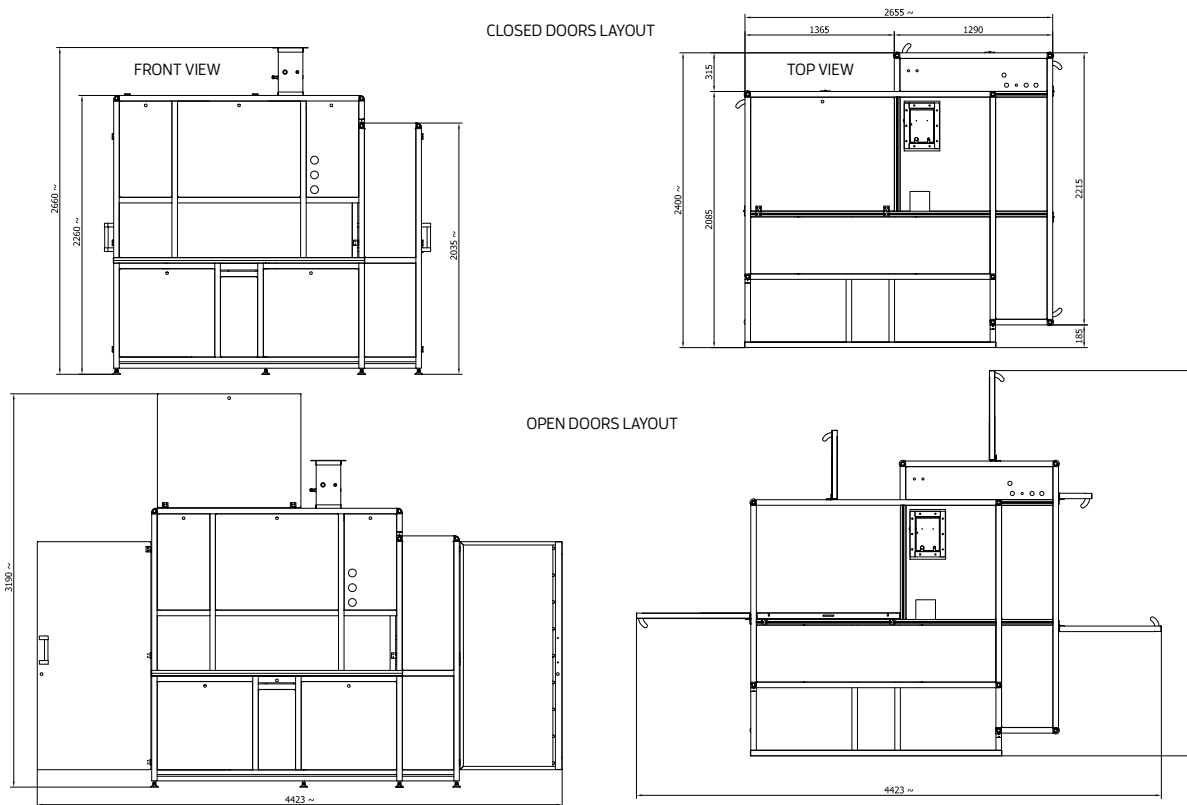
- Reduction of electricity consumption = respect for environment
- Availability of components
- Remote control high technology
- Safety



Via G. B. Stucchi 66/4  
20900 Monza - Italia

Tel. +39.039.836246  
Fax. +39.039.2840278

www.new-tem.com  
sgm@new-tem.com



# NEW-TEM XPL 245

Machine Dimension	
Length [mm]	2655
Width [mm]	2400
Height (with predisposition exhaust pipe)	2260 (2660)
Workstation height [mm]	950
Weight [kg]	8500

Operating pressures [bar]	from 2 to 10 bar
Thickness of burrs	up to 0,1 mm
Cycle time [sec]	60
Installed power	20kw
Line voltage	380V 50Hz (3P+N+T)
Auxiliary voltage	24 V DC

Deburring chamber dimensions	
Length [mm]	from 350 to 500
Diameter [mm]	260

Consumption					
Treated material	Outbreak	% stroke	Chamber pressure [bar]	CH <sub>4</sub> consumption for 1000 cycles	O <sub>2</sub> consumption for 1000 cycles
Aluminium	Single	17	5,0	5,1	25,3

